

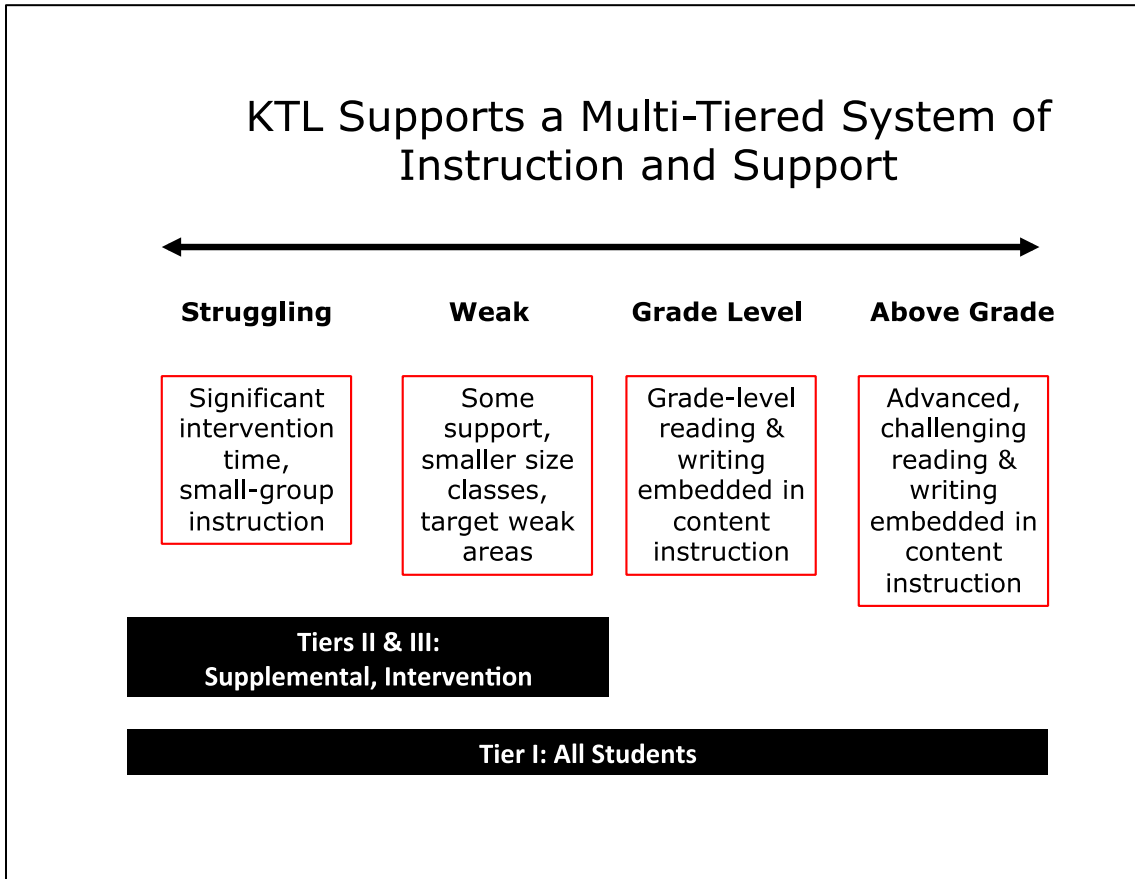


Keys to Literacy Support for Rtl and MTSS Literacy Initiatives

The phrases “Response to Intervention” (Rtl) and “Multi-Tiered System of Supports” (MTSS) are sometimes used interchangeably among educators. They are both instructional frameworks that include universal screening of all students, multiple tiers of instruction and support services, and an integrated data collection and assessment system to inform decisions at each tier of instruction. The framework can be used for literacy, math, or positive behavior supports. Keys to Literacy professional development supports Rtl and MTSS literacy initiatives in these ways:

- Keys to Literacy teaching practices are designed to be used as Tier I instruction for all students in general education, content classrooms.
- General education teachers learn how to differentiate and scaffold instruction to accommodate students with a range of literacy skills and need for guided practice.
- Intervention educators (e.g., special education and reading teachers, para-professionals) learn how to provide supplemental, Tier II instruction to struggling students that includes more explicit instruction and guided practice.
- Participants in Keys to Literacy professional development learn how to use a number of comprehension, vocabulary, and writing activities as formative assessment to drive instructional decisions.

The visual below shows how Keys to Literacy instructional practices can be used to improve the literacy skills of a wide range of students.



Is there a difference between Rtl and MTSS?

The Rtl framework was developed after the 2004 reauthorization of the Individuals with Disabilities Education Improvement Act (IDEIA). It offers an alternative path to identifying students as eligible for special education services from the older IQ-achievement discrepancy criteria. Therefore, Rtl has traditionally had a special education focus. The emphasis in Rtl is to provide effective instruction and intervention to reduce the number of students being referred to Special Education by providing evidence-based, high quality literacy instruction in all tiers.

MTSS, however, is a more recent and comprehensive framework than Rtl. MTSS emphasizes multiple levels of instruction and support for all learners, including students with advanced skills or struggling students who may not be eligible for special education services. MTSS is typically a general education initiative that strives to ensure that practices, policies, and programs are aligned on classroom, school, and district levels. In addition to focusing on student support, MTSS emphasizes professional development and instructional support for general education and support staff who are delivering literacy instruction. MTSS is more likely to produce professional development that is aligned across a school and district. Finally, MTSS requires a greater collaboration between general education and special education within each school as well as between the school and the district.

How can I learn more about MTSS?

Visit the following websites for more information:

- [Short MTSS overview video](#)
- [Introduction to MTSS](#) then click on the links that give overview of Universal (Tier I), Secondary (Tier II), and Tertiary Level (Tier 3) of instruction
- [Florida MTSS](#)
- [Blog post](#)
- [Overview](#)